

**2025
PRECINCT
COMMITTEEMEN
TRAINING**





A MESSAGE FROM THE CHAIRWOMAN

Dear Precinct Leader,

When the Founding Fathers designed the American political system, they did so in such a way that the people would have the power. Over time, we've seen again and again that the Party that is most successful at the local level is the most successful in the nation. This will only remain true as long as those at the local level are active and involved in choosing the leaders and governing our nation.

When asked what kind of government we had, Benjamin Franklin is said to have replied "A Republic, if you can keep it." A well-structured and representative government does not just happen. It is dependent on informed citizens becoming involved in choosing our leaders.

Our Republican form of government is dependent on the process that has been put in place to elect our leaders. Your role as a Precinct Leader is critical in that process. As a Party, our job is to elect the candidates that the people have chosen to be their Republican nominees.

To do this, we must go beyond our committees and into our communities. There are over 650,000 registered Republicans in the state, and it is our job to engage all of them. This manual is designed to explain how you, as a Precinct Leader, fit into this process, and how to be successful in your role.

Precinct leaders are critical to keeping a free society where the people rule. Without leaders like yourself, who are willing to sacrifice their time, treasure, and talent to ensure we keep a free society, our representative form of government would quickly dissipate. For your contribution, we are grateful.

Sincerely,

Dorothy Moon, Chairwoman
Idaho Republican Party

Important Contact Information for the County Party Organization

Idaho Republican Party Contact Information

Idaho Republican Party Headquarters

Address: 1619 W Jefferson Street, Boise, ID 83702

Phone: (208) 343-6405

Email: info@idgop.org

Website: www.idgop.org

STATE ELECTED OFFICIALS CONTACT INFORMATION

Senator Mike Crapo

Washington D.C. (202) 224-6142
Boise: 251 E Front St, Suite 205
Boise, ID 83702
(208) 334-1776

Congressman Russ Fulcher

First Congressional District
33 E Broadway Ave
Meridian, ID 83642
Phone: (208) 888-3188
Fax: (208) 888-0894

Governor Brad Little

State Capitol
P.O. Box 83720
Boise, ID 83720
Phone: (208) 334-2100
Fax: (208) 334-3454

Attorney General Raúl Labrador

700 West Jefferson, Suite 210
Boise, ID 83702
Phone: (208) 334-2400
Fax: (208) 854-8071

State Treasurer Julie Ellsworth

304 N 8th Street, Room 403
Boise, ID 83702
Phone: (208) 334-3100
Fax: (208) 332-2959

Superintendent of Public Instruction

Debbie Critchfield

650 West State Street
Boise, ID 83702
Phone: (208) 332-6800
Fax: (208) 334-2228

Senator James Risch

Washington D.C. (202) 224-2752
Boise: 350 N 9th St, Suite 302
Boise, ID 83702
(208) 342-7985

Congressman Mike Simpson

Second Congressional District
802 W Bannock, Suite 6000
Boise, ID 83702
Phone: (208) 334-1953
Fax: (208) 334-9533

Lt. Governor Scott Bedke

State Capitol
P.O. Box 83720
Boise, ID 83702
Phone: (208) 334-2200
Fax: (208) 334-3259

State Controller Brandon Woolf

State Capitol
P.O. Box 83720
Boise, ID 83720
Phone: (208) 334-3100

Secretary of State Phil McGrane

700 W. Jefferson Street, Room E205
Boise, ID 83720
Phone (208) 334-2852
Fax (208) 334-2282

LOCAL REPUBLICAN PARTY CONTACT INFO

POSITION	NAME	PHONE	EMAIL
COUNTY CHAIR			
VICE CHAIR			
SECRETARY			
TREASURER			
STATE COMMITTEEMAN			
STATE COMMITTEE WOMAN			
STATE YOUTH PERSON			
LEGISLATIVE DISTRICT CHAIR			
STATE SENATOR			
STATE REPRESENTATIVE A			
STATE REPRESENTATIVE B			

Insert local official's information here.

IDAHO REPUBLICAN PLATFORM

ADOPTED June 15, 2024 in Coeur d'Alene

WE ARE REPUBLICANS BECAUSE:

We believe the strength of our nation lies with our faith and reliance on God our Creator, the individual, and the family; and that each person's dignity, freedom, ability and responsibility must be honored.

We believe we are inheritors of a distinct Western Civilization and that our traditional culture safeguards our identity as a free people. We believe in American Exceptionalism.

We believe the United States of America is unlike any other country on earth.

We believe the United States Constitution is the greatest and most inspired document to govern a nation, and the republican form of government it gives us, (U.S. Const. Art. IV §4), is the best guarantor of freedom in history.

We believe in equal rights, equal justice and equal opportunity for all, regardless of race, creed, sex, age or disability.

We believe human life begins at conception and is protected by the unalienable rights endowed by our Creator along with the fundamental right to life and shall not be infringed upon.

We believe free enterprise and encouraging individual initiative have brought this Nation opportunity, economic growth and prosperity.

We believe government must practice fiscal responsibility, and that taxpayers shall allow the government only the money necessary to provide Constitutionally specified functions.

We believe that our Founding Fathers gave us a government that is a servant of the people, not our master. The proper role of government is to provide for the people only those critical functions, which individuals or private organizations cannot perform.

We believe the most effective, responsible, responsive government is government closest to the people, and the sovereignty of the state must be protected. That government is best that governs least.

We believe Idahoans must protect the principles and values that have made us strong.

We believe Idahoans value and should preserve our national strength and pride while working to promote peace, freedom and human rights throughout the world.

We believe the protection of individual rights is upheld when personal responsibility for behavior is exercised.

We believe the Republican Party is the best vehicle for translating these ideals into positive and successful principles of government.

For the full Idaho Republican Party Platform, visit: www.idgop.org/page/about-us

WHAT IS A PRECINCT COMMITTEEMAN?

Being a Precinct Committeeman is more than simply attending a few Central Committee meetings each year. As a PC, you are one of the most vital building blocks of the Republican Party. Just as Senators and Representatives are elected to represent the voters in the legislature, you are elected to represent the voters on the GOP Central Committee.

A PC who is truly fulfilling his or her role is the linchpin connecting the voters to the Republican party and to the Republican candidates running for office.

They create the precinct-level organization needed to equip all Republicans to fully participate in our political process.

POSITION IS CREATED BY STATE CODE

34-624. ELECTION OF PRECINCT COMMITTEEMEN - QUALIFICATIONS

- (1) At the primary election, 1980, and every two (2) years thereafter, a precinct committeeman for each political party shall be elected in every voting precinct within each county. The term of office of a precinct committeeman shall be from the eighth day following the primary election until the eighth day following the next succeeding primary election.
- (2) No person shall be elected to the office of precinct committeeman unless he has attained the age of eighteen (18) years at the time of his election, is a citizen of the United States, and is a registered elector of the voting precinct for a period of six (6) months next preceding his election.

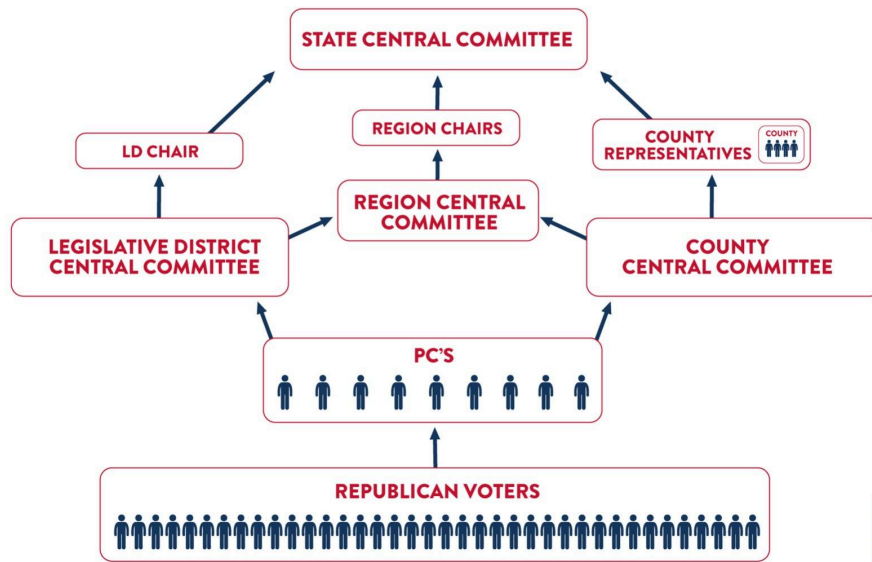
A PC'S ROLE IN THE PARTY

THE PARTY IS A HIERARCHICAL STRUCTURE:

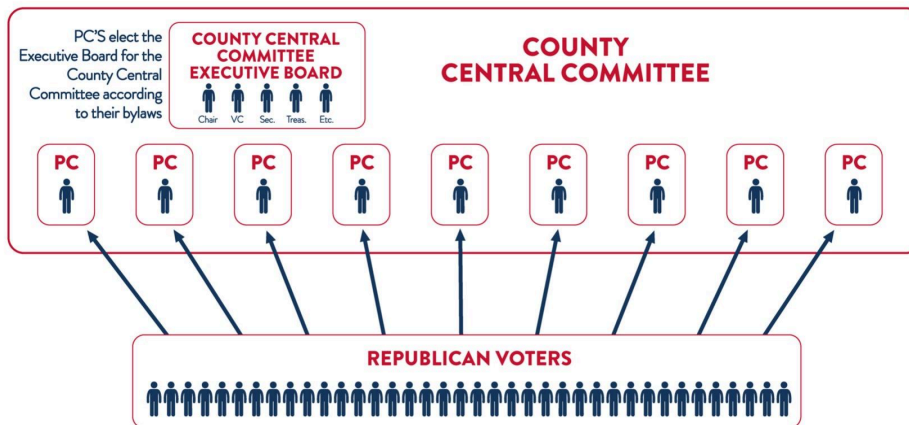
- Counties and Legislative Districts are composed of Precincts
- The Precinct Committeemen represent the will of the voter and responds to the voter
- The local Central Committee is the governing body in the County or District and represents the will of the collective PCs by majority rule
- The State Central Committee is the governing body of all Republican committees in Idaho and represents the will of the collective Central Committees by majority rule of the representatives elected by the local Central Committees

Who is in charge? The voters are the ultimate authority.

THE STRUCTURE OF THE PARTY

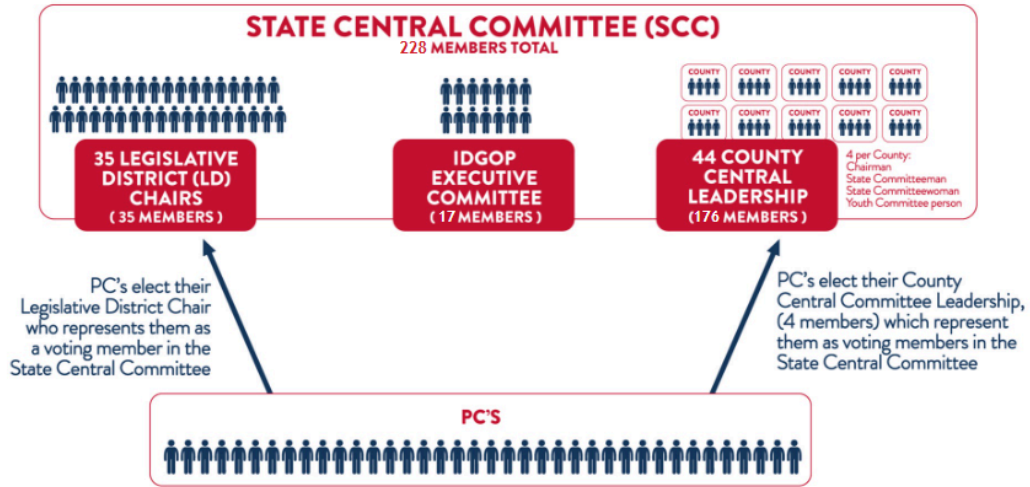


THE STRUCTURE OF THE COUNTY CENTRAL COMMITTEE

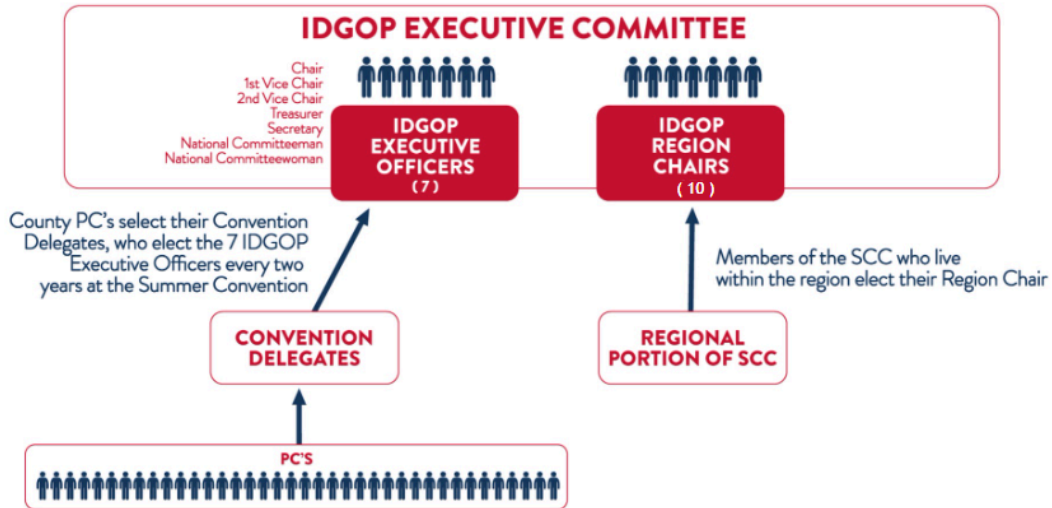


...and their County Central Committee, as seen above.

THE STRUCTURE OF THE STATE CENTRAL COMMITTEE



THE STRUCTURE OF THE EXECUTIVE COMMITTEE



DUTIES OF A PRECINCT COMMITTEEMAN

PCs have several significant responsibilities and duties they are to perform:

- PCs represent Republican voters at party meetings
- Participate in Central Committee events and subcommittees
- Develop a precinct-level organization for their precinct
- Be ready, willing, and able to support Republican campaigns between the primary and general elections
- Develop a Get Out the Vote plan for election day for their precinct
- Identify and recommend to the county clerk people to serve as election judges in their precinct voting locations
- Provide a list of 3 names for County or Legislative District vacancies

FIRST DUTY

- Keep in mind that your responsibility is to govern the direction of the County Central Committee and the Legislative District Committee
- The leadership of your committees should offer recommendations and seek support before they take action.
- The Central Committee is not a rubber stamp of approval for every action
- At meetings, be ready to ask questions and understand what you are being asked to support

SECOND DUTY

Party events require manpower. You are that manpower.

- County fairs across the state need hundreds of volunteers
- Fundraising Events throughout the year need workers
- Various local events throughout the county occur virtually every month
- The more people who are available to help, the more events we can accommodate
- The county will have a volunteer coordinator – let that person know you want to help and how you would like to help
- Your legislative district may also host events – those events will be announced by the Chairman – be willing to participate

THIRD DUTY

As a Precinct Committeeman, it is your statutory responsibility to recommend people to serve as judges to work in your precinct on each election day.

34-303. APPOINTMENT OF ELECTION JUDGES BY COUNTY CLERK.

- (1) ... The precinct committeemen shall recommend persons for the position, in their respective precincts, to the county clerk in writing by the fifth Friday prior to the primary election and the county clerk shall appoint the judges from such lists if the persons recommended are qualified.

Doing so helps ensure election integrity in Idaho.

The weakest link in the Idaho Election process is same-day registration.

People are allowed to become voters simply by showing up in the polling place on election day where they are registered by people who are NOT full-time county employees. We assume the judges are appropriate, but the fact remains that in Idaho many of the appointed chiefs recruit their own people to work the precinct.

A judge who wants to operate illegally and allow people to be recruited to register and vote may be caught, and the voter may be caught, but those votes will still be counted. The risk is low as is, but it could be made even lower if both the Republican and Democrat PCs are recommending judges to the clerk.

FOURTH DUTY

As a precinct committeeman, if a vacancy exists in a Legislative seat or a County Commissioner seat, the Legislative District Committee or County Central Committee will provide three candidates to the Governor within 15 days and he will appoint a replacement out of those three names.

If a County seat other than Commissioner is vacated, the County Central Committee will provide three candidates to the County Commission and they will select one of those three candidates.

FIFTH DUTY

Develop a precinct-level organization plan for their precinct

- This is the hard part of the job – there will be an entire training session on how to do this so today we focus on what it is.
- A PC cannot go door to door efficiently in the whole precinct
- Divide and conquer – 20 to 50 homes per block
- Recruit block captains to work each block

In addition to block captains, identify others willing to do other jobs:

- Volunteer Coordinator
- Sign Captain to distribute candidate signs
- Event Captain to handle candidate meet and greets, voter registration drives or precinct open houses for information sharing
- Candidate Coordination for Campaign Literature Drops and voter outreach

Learn YOUR PRECINCT. Get to know your precinct in terms of voters:

- Where are your GOP voters living?
- What is their turnout?
- How many votes has the precinct historically turned out?
- Look at past voting history to see which voters are Presidential, General Election, Primary, and Off-year voters.

All elected PC's can request access to the State Party GOP Numinar to obtain voter information.

SIXTH DUTY

Be ready, willing, and able to support Republican campaigns between the primary and general elections

Candidates usually will not have a precinct-level operation. They will rely on the party and the precinct committeemen to help reach voters in your precinct. Coordinating with candidates and turning out more voters from your precinct will help bring each candidate closer to victory.

Help can include coordinating literature drops for multiple Republican candidates, finding a local venue (a supporter's home)/teaming up with nearby PC's for meet-and-greet events, and/or turning out voters to attend a larger campaign event.

SEVENTH DUTY

Get Out the Vote (GOTV) involves doing everything possible to ensure that every Republican casts a ballot in the election.

- Primary turnout averages around 40 percent
- Off-year elections, because of the Idaho races for legislature and State Executives, will average 90%

Decisions are made by those who show up. Ensure all your voters show up – particularly true in the more purple.

Your Central Committee should be working to Get Out the Vote (GOTV), which involves multiple facets for PC's to be involved in:

- Identifying absentee ballot requesters and following up with them
- Providing sample ballots just as their absentee ballot arrives in the mail
- Keeping track of which Republicans in your precinct have voted
- Providing sample ballots at the polling location for your precinct
- Identifying poll watchers to be appointed for your precinct
- Offering transportation to the polls